



INDUSTRIAL
SUPPLY CHAIN
COMPANY

EASTEC

INTERNATIONAL

EASTEC OUTLOOK

Eastec established as a Partnership firm at Lahore Pakistan in 1989, as an industrial trading company mainly and progressively entered into other business segment like industrial services. The group of companies with their 30 years of experience in various work fields is now advancing to spread its roots into global market and also in the Information Technology industry.

Our team of dedicated Engineers and skilled field & office based Sales staff contemplates to enhance its efforts to meet any ever increasing challenging requirements by using modern techniques and methods.

QUALITY MANAGEMENT SYSTEM



Product Promotion In the Exhibitions



MAKING THE WORLD SAFER & CLEANER



Flexitallic®

THROUGH ENGINEERED SEALING SOLUTIONS



Ring Type Joint

The metallic Ring Type Joint is used in the petroleum industry, where high pressure applications necessitate the need for a high integrity seal.



Thermiculite

Another first for Flexitallic. Thermiculite - the complete sealing solution. Thermiculite is specified by name where critical sealing matter.



Spiral Wound Gasket

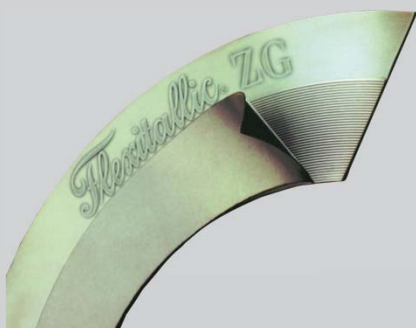
Driven by the industry's need for safe, effective sealing solutions for increasingly demanding applications, Flexitallic invented the spiral wound gasket in 1912.



Sigma

The universal sealing solution

Based on PTFE. Sigma offers outstanding chemical resistance while the unique manufacturing process results in a biaxially fibrillated structure ensuring high levels of seal integrity.



FLEXPRO™

Kammprofile

gaskets are the ideal product choice for standard pipeline and heat exchanger applications. They provide a high level of sealing integrity but with the ability to seal at seating stresses normally associated with sheet materials.



Compression Packings

For pumps and valves
Full range of high performance plaited compression packing.
Enviroflex molded valve stem seals for the highest levels of



steeltrade
steel piping components

a complete piping package solution

INDUSTRIAL PIPES

ST supply Steel or Carbon pipes, both seamless and welded, for different purposes, for low or high temperatures, medium or high pressures, for industrial plant appliances, suitable also into corrosive environment. They fulfil the ASME, EN and PED conformity requirements.

PIPES FITTINGS

We supply BW fittings, in particular elbows, Tees, concentric and eccentric reductions, caps, socket welded / threaded fittings in all the materials available for the different applications.

GASKETS AND BOLTS

We supply different types of gaskets: spiral, ovals, octagons shaped and made by a wide range of materials.

Steeltrade Special Pieces

Steeltrade is able to design and realize any special piece requested by there customers. Their production is certified by international Institutes such us RINA, UKAS, Iq NET.





FYFO - FILTER "Y" FORGED

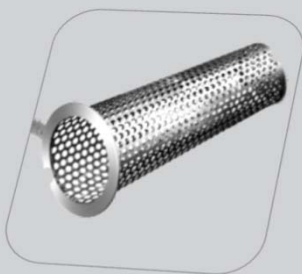
The Y filter is the most common and economical type of filter for permanent fluid or gas applications. Thanks to its compact construction, its light weight and its easy access for rapid cleaning, it is used for many generally standard system applications.

Permanent filter, straight line, suitable for filtering fluids in either the liquid state (water, seawater, petroleum and its derivatives) or the gaseous state (gas, air, chemical products) through a perforated plate filter element placed perpendicular to the direction of flow.



TIB – Inverted Bucket Steam Traps

The inverted bucket type of steam trap is created for standard and special applications, designed to the customer's specifications, welded body. Steam traps suitable for high pressures and capacities, usable for all applications.



FCO – FILTER CONICAL

Temporary filter, in-line, suitable for filtering fluids or gases, designed for brief periods of use, such as the fine-tuning and start-up of a plant. Installed to remove any coarse detritus such as rags, electrodes, deposits and rust left inside the pipes



TERMODYNAMIC – STEAM TRAPS TTD

The thermodynamic type of steam trap is created for standard applications, designed for standards customer's requirements, it's obtained from a machined forged billet. Steam traps suitable for high pressures and capacities, usable for all applications.



GATE VALVE

- one- piece Flexible wedge gate
- Bolted bonnet construction
- Outside screw and yoke
- Threaded or welded in place seat ring
- Manual operation standard, actuation available.



GLOBE VALVE

- Plug type disk
- Straight Pattern
- Bolted bonnet
- Integral body seat or separate seat ring
- Rising hand wheel
- Gearbox or power actuator operated



Check Valves

- Dual Plate Design Minimize Valve Cracking pressure and reduces valve pressure drop
- Spring loading on plates assists valves closing to ensure tight seal and minimizing slamming
- Metal to Metal seating standard



Trunnion Mounted Ball Valves

- Bi- Directional flow
- Three- piece bolted
- Full bore through conduit- suitable for pigging operations
- Anti- blowout stem
- Unique valve serialization

The global partner of choice for essential flow management



CHOKE VALVES

Master Flo right-angle choke valves provide flow management for all service types, including severe service such as high erosion, high pressure, and high temperature.



TRIM SELECTION

In addition to our standard external sleeve over ported cage valve trim, Master Flo offers specialty trims to meet all of your application requirements.



CONTROL VALVES

Master Flo inline control valves are proven in process control systems that deal with high temperatures, high pressure differentials, cavitation and other severe service conditions.



SURFACE ACTUATION

Master Flo designs and manufactures a range of actuators to deliver accurate and reliable control of our choke and control valves. We also provide third-party actuators to meet the specific requirements of your project.



Creating Fluid Solution



LEWA Eco flow

- Pressure: atmospheric up to 400 bar
- Flow rate: 0.1 l/h up to 20 m³/h
- Temperature : -50°C up to 400°C per pump head
- World's leading diaphragm pump technology
- API-certified



LEWA Eco smart

- Pressure: up to 80 bar
- Flow rate: up to 300 l/h
- Temperature: up to 120°C
- Pumps and meters economically and reliably
- API-certified



LEWA Eco Dos

- Pressure : atmospheric up to 20 bar
- Flow rate: 0.4 l/h up to 1.5 m³/h
- Temperature: -10°C up to 80°C
- Mechanical actuated pump
- Hermetically tight
- Patented 4-layer PTFE diaphragm
- Highest metering accuracy



Metering & Mixing System

- High operational safety
- Offers highly customized turnkey solutions
- Precise and reproducible rates, even at high pressures.



Your No.1 Equipment Team



Portable machines VALVA SERIES

for grinding and lapping of flat sealing surfaces in globe and safety valves, valve disks, and flanges from DN ¼"–64" (8–1600 mm). Simple, easy, one-man operation
Wear-resistant tooling
Fast results

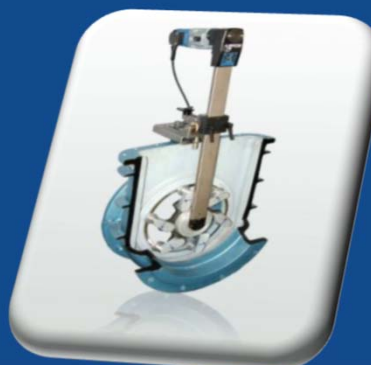


Portable grinding and lapping machine

It it eccentricity for the machining of sealing surfaces/nozzles in safety valves of DN ½"–12" (15–300 mm). The EFCO TSV utilizes a grinding movement overlaid by an additional eccentric movement

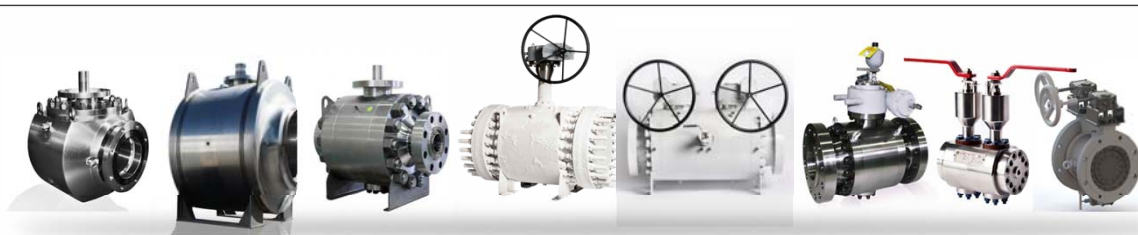
VSK SERIES

The EFCO VSK Series portable machines prove their strength everywhere that fast valve repair is required by facilitating quick grinding of conical sealing surfaces in: High-pressure, shut-off, control and globe valves of DN ¼"-12" (8-300 mm)
Simple handling and setup
Low weight
One-man operation
Wear-resistant tools
Fast results



HSL SERIES

Portable machines for high-speed grinding of hard sealing surfaces ($\geq 35\text{HRC}$) in high-pressure gate valves and wedges and check valves and disks of various design. High-speed, gear-driven planetary wheels enable the HSL to produce the highest removal rates in the industry



Proudly made in Italy

erreesse
VALVES

Proudly made in Erreesse



High Temperature

121° to 1100°C (249,8° to 2012°F)

Erreesse production range offers valves engineered to withstand and exceed high temperature applications with specific constructions and duly selected materials.



Low Temperature

0° to -50°C (32° to -58°F)

When Natural Gas has to be separated into fractions or treated to protect equipment from contaminants, first stage of sweetening and acid removal take part at 0° to -50°C (32° to -58°F) before gas liquefaction stage; propane or a mixture with other gases in small quantities is the cooling element.



Cryogenic

-51° to -196°C (-59,8° to -320,8°F)

When Natural Gas has to be separated into fractions or treated to protect equipment from contaminants, sweetening and acid removal at -51° to -196°C (-59,8° to -320,8°F), are the final stage to do that with pure or mixed refrigerants as cooling elements.



Corrosive & Dirty

Aggressive and solid contaminants

Erreesse valve ranges includes special models suitable for severe abrasive, slurry, scaling, fouling and solidifying services.





Wireless Triaxial Sensor

Wireless triaxial vibration and temperature integrated sensor, collect velocity, acceleration, displacement and temperature signal simultaneously.



RH 1000 Online Data Collector

Monitor Vibration, temperature, process info and speed, synchronous collection, strong data collection ability, suitable for monitoring variable speed machine.



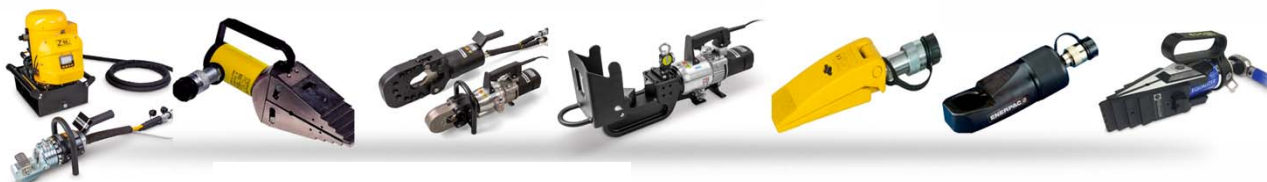
RH712 Vibration Analyzer

- Touch screen
- Route measurement download from PC
- Manual input function
- Infrared temperature measurement.
- Camera function
- Set equipment status
- Professional PC analysis function.
- CE marking available



RH560 Wireless data collector

Multiple communication options, strong data collector capability, all channel synchronous acquisition, monitoring vibration and temperature, smart alarm for abnormal machines.



Atlas Copco

Hydraulic Torque Wrenches

Complete range of hydraulic torque wrenches have been developed to provide tailored solutions to any bolting problem - ideal for make-up and break-out of bolted joints . With options of interchangeable heads or dedicated square drive and low-profile hexagon cassettes, all products offer reliable light-weight yet powerful performance

BASE BOLT TENSIONER

The Base Bolt Tensioner, designed specifically for the wind energy market, eliminates any potential thread fit problems by utilising the existing hex nut on the stressing bar to induce the required load.

Benefits:
Simultaneous tensioning
Lightweight and compact
Up to 25mm one step operation available
Interchangeable

Hydraulic Tensioners

Bolt tensioning is an accurate and time saving method for tightening bolts and studs in all industries . Hydratight, through creative design and utilizing the most advanced engineering, has developed a wide range of hydraulic bolt tensioners, which provide a solution to topside, and subsea, bolting problems

MICRO TENSIONER

The Hydratight Micro tensioner for Grade 10.9 bolts has been designed to maximise clamping forces and has been fully trialled on site in the wind energy industry. The Micro tensioner is available as a single deck tool for applications with a wider pitch between the bolts and a double deck tensioner for applications with a smaller pitch

Pneumatic Tools

Pneumatic Impact Wrenches and Nut Runner





GENERAL PURPOSE INDUSTRIAL BEARINGS



Spherical Roller Bearings



Self-Aligning Ball Bearings



Cylindrical Roller Bearings



Thrust Bearings



Tapered Roller Bearings

HEAVY INDUSTRY BEARINGS



Four-Row Cylindrical Roller Bearings



Double Row Tapered Roller Bearings



Four-Row Tapered Roller Bearings



Robust Vibrating Screen Bearings

OFFLINE BULK FILTRATION FOR TANK FLUSHING AND TRANSFER OF DIESEL AND OIL



ACROSS ALL FILTERS TYPE





宝鸡航天动力泵业有限公司
BAOJI AEROSPACE POWER PUMP CO.,LTD

Performance Range

Structural type: Triplex or five horizontal single-action cylinder reciprocating plunger pump.

Structural Design: GB/T9234.

Transmission Medium: Mud, pulp or mortar Medium

Temperature: $\leq 40^{\circ}\text{C}$



Mining Slurry Pump



Coal mine fracturing pump

Performance Range

Structural Type: Triplex horizontal single-action cylinder reciprocating plunger pump.

Structural Design: In accordance with GB/T9234, MT/T188.2-2000

Transmission Medium: Pure water

Temperature: $\leq 40^{\circ}\text{C}$

CGWIC

China Great Wall Industry Corporation

Established in 1980, China Great Wall Industry Corporation (CGWIC) is the sole commercial organization authorized by the Chinese government to provide commercial launch services, satellite systems, and to carry out space technology cooperation.